



Vegetation and Tree Care Solutions





MT2

Dedicated Tracked Mulcher



GREEN-TEC™
A TEREX BRAND



AM4 – 2m Mulching head

Mulching is the process of covering the soil with a layer of material to achieve various benefits

- Mulch can be created locally or remote
 - **Locally** create mulch using a tracked mulcher onsite to shred or grind directly as it sits
 - **Remote** mulching involves removing material and processing with a shredder or grinder for distribution later.
- Local Mulching with a tracked mulcher offers Efficiency & easier landscaping



Efficiency – Dictated tool for the Job

- Tracked mulchers are the most efficient method of localised mulching
- They can handle large areas quickly,
- More cost effective compared to traditional methods such as,
 - Excavators
 - Dozers
 - Chippers
 - Grinders
 - Transportation



What is Mulching



Landscape effect

- Eco-friendly
- Minimizes disturbance to wildlife habitats
- Selective finish
- land value and appeal Increased



Improvement in soil quality

- Retains soil moisture
- Adds organic matter into the soil,
- Delivers nutrients
- Helps regenerate ground
- Mitigates growth of mold
- Reduces fungus diseases



What is Mulching



Erosion control

- Mulch holds soil in place,
- Leaves a protective layer over the soil
- Protects root system
- Naturally controls bare ground erosion from wind/rain



Conservation of Time and Environment
Tracked mulchers can handle large areas quickly
Reducing the time and labour required compared to traditional methods

Primarily used by professionals in land & Vegetation management

- **Forestry and Land Clearing Contractors**
- **Utility and Infrastructure Maintenance Crews**
- **Environmental and Conservation Organizations**
- **Agricultural and Ranching Operations**
- **Municipal and Government Agencies**



A Dedicated Machine for the Job

Safety

- 3-point side entry
- Roof Escape (egress-ingress)
- Lexan Glass

Versatility

- High lift arm
- Quick attach plate

Cooling

- Extreme duty cooling system (52c)
- Reversing fan

Comfort

- Pneumatic suspension seat
- Fully adjustable controls
- Personalized operation sensitivity

Service and Maintenance

- Tilt Cab
- Fluid visibility

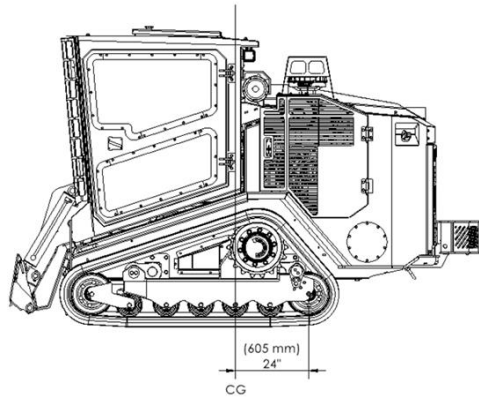
Dedicated Closed loop Mulcher (attachment) Pump

| Make | Model | Flow (GPM) | Pressure (PSI) | Hyd. HP | |
|--------------------|------------|------------|----------------|---------|----------|
| FECON | FTX 150 | 60 | 5000 | 175.03 | |
| FECON | 135 VRT | 50 | 4061 | 118.47 | |
| PRIME TECH | PT 175 | 61 | 5080 | 180.79 | |
| Princo | Raptor 200 | NA | NA | NA | |
| GT | GT 25 | 75 | 6000 | 262.54 | |
| RAYCO | C120 | 40 | 3777 | 88.14 | |
| RAYCO | C200 | 66 | 5800 | 223.34 | |
| JCB | 325T FM | 33 | 4000 | 77.01 | |
| asv | RT 135 | 50 | 4060 | 118.44 | |
| CLIPPERTRAK | SK 190 TR | 55 | 5500 | 176.49 | |
| CAT | 299D3 | 40 | 4061 | 94.77 | |
| TAKEUCHI | TL 12 | 40.4 | 3481 | 82.05 | |
| Bobcat | T86 | 42 | 4061 | 99.51 | Optional |
| JOHN DEERE | 333G | 41 | 3450 | 82.53 | Optional |
| Kubota | SVL 97 | 40 | 3553 | 82.92 | |
| CASE | TV 450 B | 35 | 5220 | 106.59 | Optional |



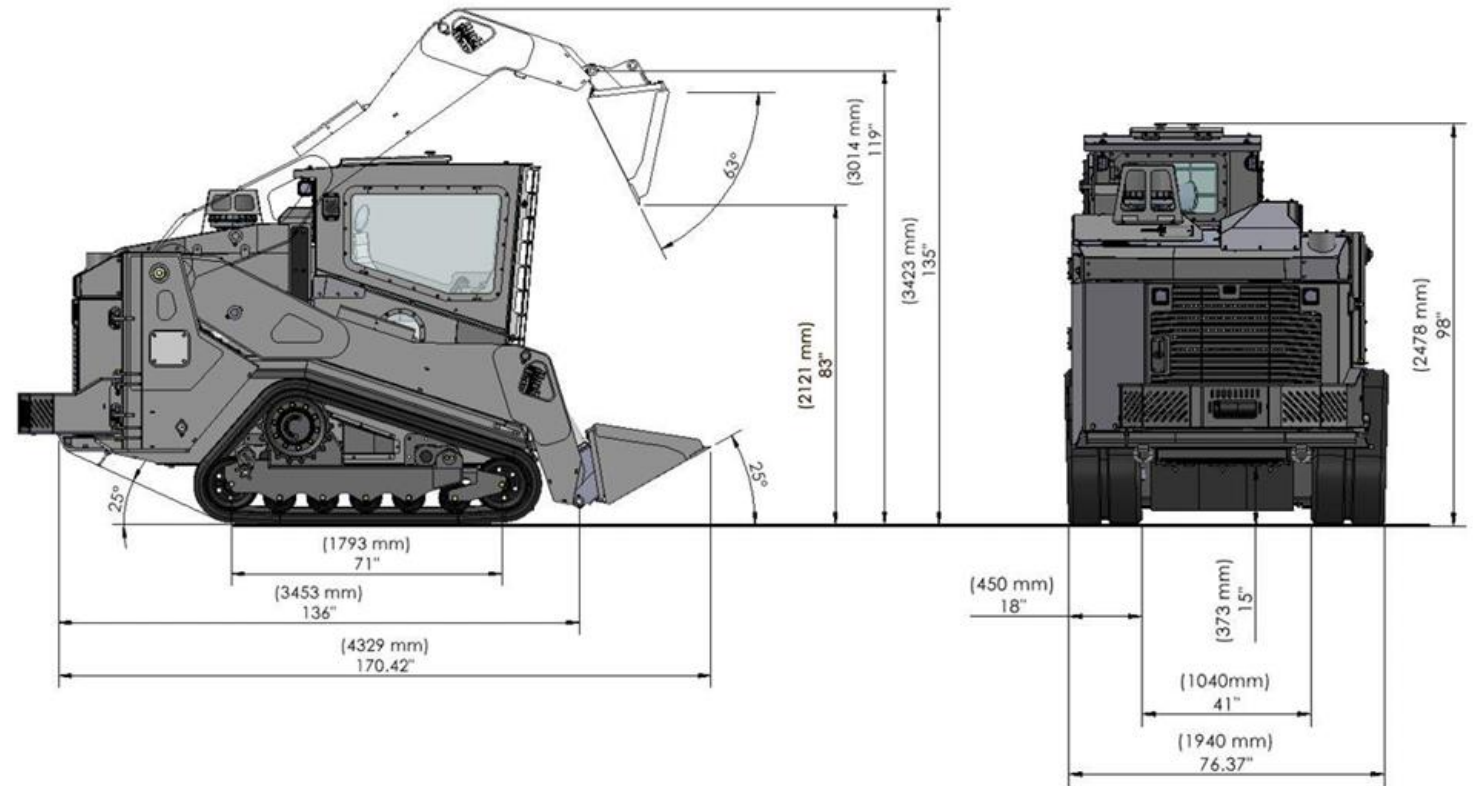
44GPM @ 5800PSI (166Lpm @ 400Bar)

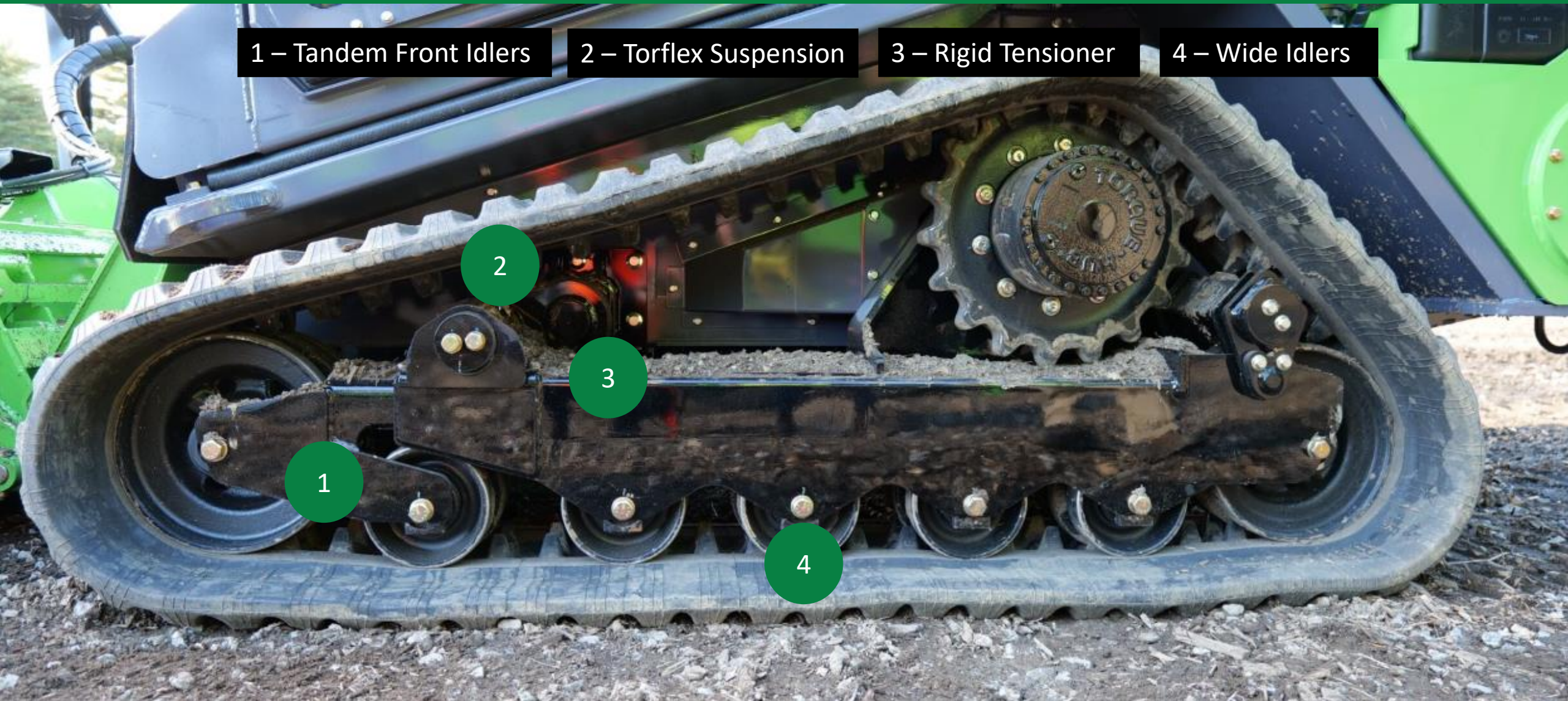
149hp (110Kw)



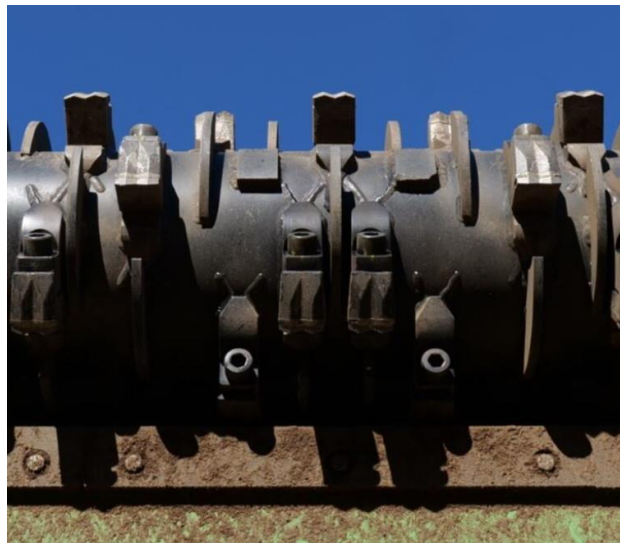
Spec

| | | |
|-----------------|---------------------|-----------|
| Weight | 14,860 lbs | 6,740kg |
| Ground pressure | 4.24 psi | 29.2 kPa |
| Travel Speed | 0-7.5 mph | 0-12 km/h |
| Cummins Engine | 275 in ³ | 4.5 l |
| Power | 155 hp | 115 kW |
| Torque | 525 ft·lbf | 712 N·m |



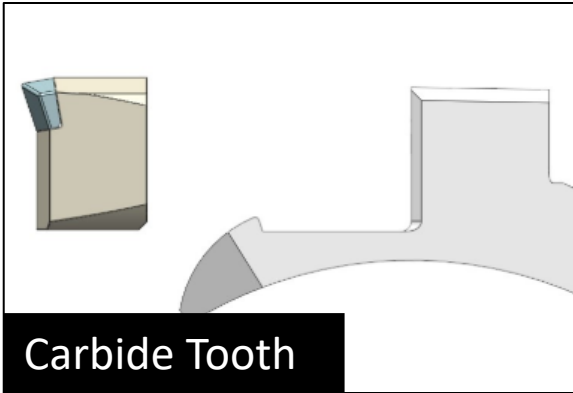


The Mulching Head



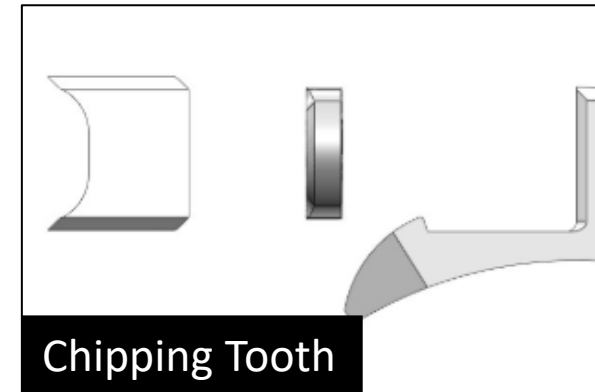
AM4

| | | |
|--------------------------|---------------------------|---------------------|
| HP Power Range | 74 - 149 kW | 100 - 200 HP |
| Volume Flow (min - max) | 121 - 197 L/min | 32 - 52 gpm |
| Hydraulic Motor | 110 cc | 6.7 in ³ |
| Max. Pressure | 410 Bar | 6000 psi |
| Drive/Belt | Polychain 112 Teeth 68 mm | |
| Drum Diameter | 324 mm | 12.75 in |
| Drum Tip to tip | 470 mm | 18.5 in |
| Drum Bearing Size | 65 mm | 2.57 in |
| Number of Teeth | 46 | |
| Bolt type for drum teeth | Socket head | |
| Working width | 2006 mm | 79 in |
| Total width | 2320 mm | 91.3 in |
| Height | 1475 mm | 58.1 in |
| Weight | 1356 kg | 2990 lbs |
| Metal used | Strenx 100 | |



Carbide teeth, featuring carbide tips welded onto a steel body, are known for their exceptional durability and resistance to wear, particularly in abrasive environments such as rocky or sandy terrains. These teeth require less frequent sharpening and maintenance compared to chipping teeth, making them ideal for tough conditions where they encounter rocks and other hard materials. While they maintain their sharpness for longer periods, they may not pick up material as effectively as chipping teeth.

Chipping teeth, made from high-grade alloy steel, are less durable than carbide teeth, particularly in abrasive conditions. They require regular sharpening and rotation to maintain their performance. These teeth are best suited for softer, less abrasive environments where precision cutting is needed. They provide a finer mulch and more aggressive cutting action, making them effective for slicing through vegetation. Chipping teeth have 4 cutting edges. They can be rotated as they wear to use all 4 edges during the life of the teeth.



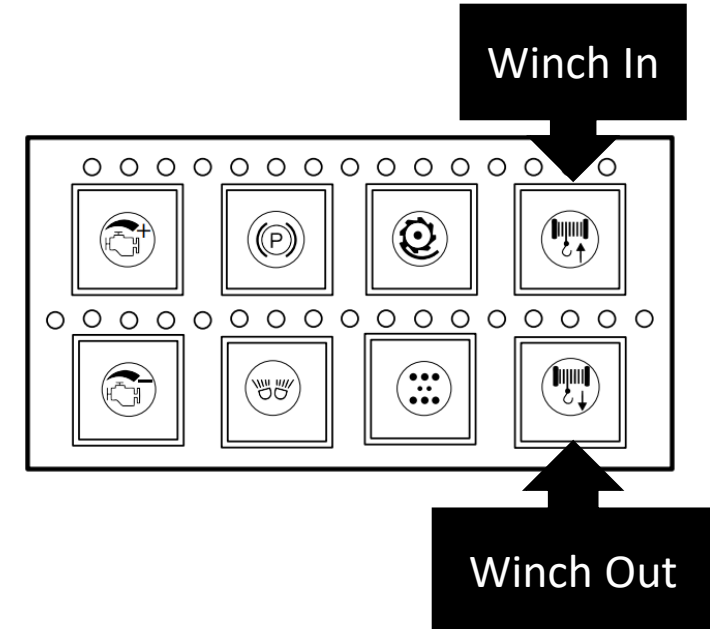
4 Cutting edge on
a chipping tooth

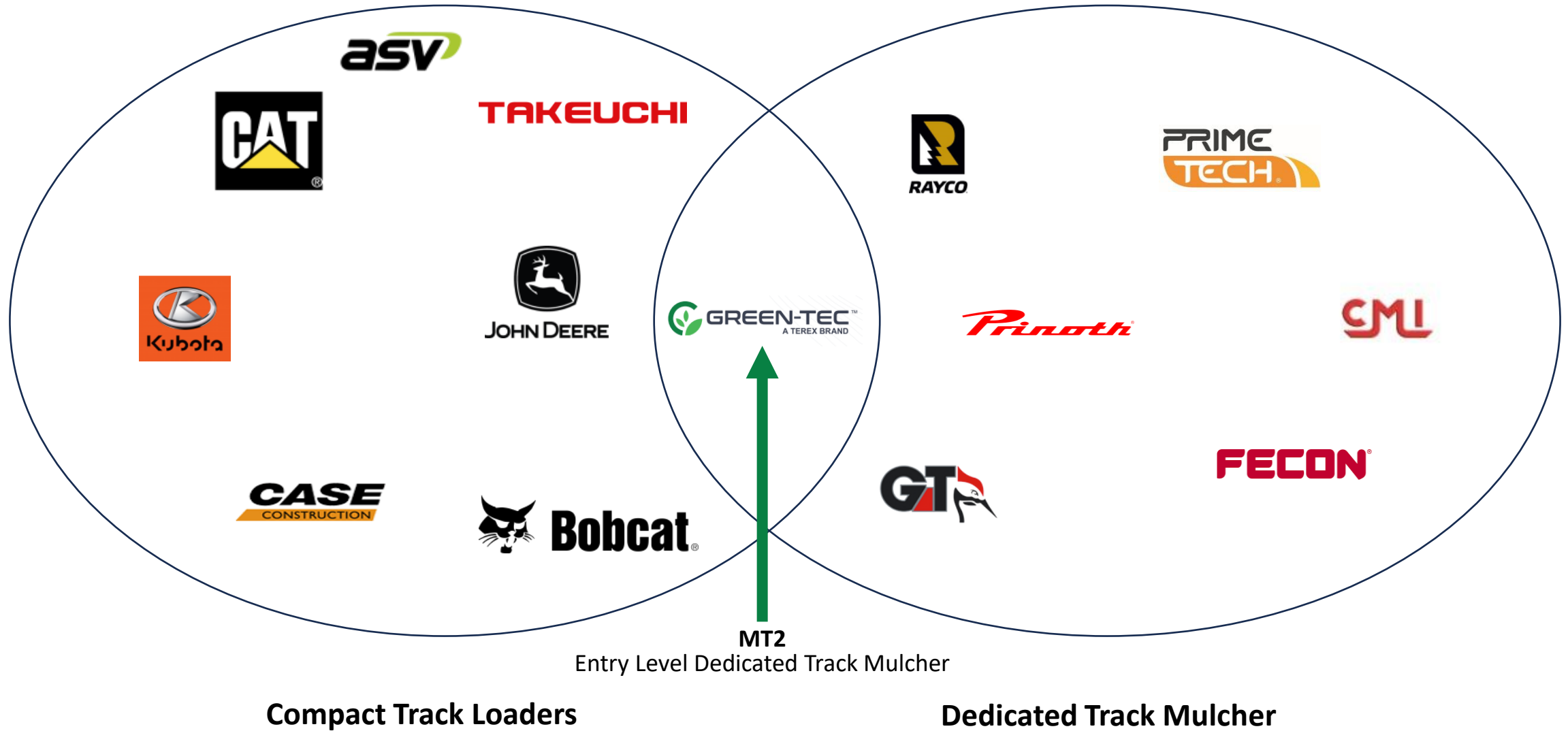


Optional Winch



Winch and rear bumper can be supply as an additional option. It's a Warn Hydraulic Winch with up to 15,000 lbs / 6,800kg pulling force. Controlled within the cab from the keypad.







GREEN-TEC™
A TEREX BRAND